

McGoodwin, Williams and Yates has extensive experience in the design of raw and treated water transmission pipelines, ground and elevated water storage tanks, distribution system improvements and telemetry systems. All aspects of related engineering services have been provided, including conceptual design, preliminary engineering, development of financing options, design and construction management.

We've listed examples of water distribution system improvements developed by MWY on the following pages.

WATER TRANSMISSION AND STORAGE EXPERIENCE

Client: *Beaver Water District*

Line: 60-inch; 54-inch; 48-inch

Length: 20,000 L. F.

Cost: \$4,100,000

Contact: Alan D. Fortenberry, P. E., Engineer-Manager
Beaver Water District
P. O. Box 400
Lowell, Arkansas 72745
PH: 479-756-3651



Client: *Springdale Water Utilities*

Line: 36-inch; 24-inch

Length: 19,000 L. F.

Cost: \$1,260,000

Contact: Rene Langston
Springdale Water Utilities
P. O. Box 769
Springdale, Arkansas 72765
PH: 479-751-5751



Client: *Carroll-Boone Water District*

Line: 30-inch; 24-inch; 24-inch

Length: 241,000 L. F.

Cost: \$11,090,000

Contact: John Summers
Carroll-Boone Water District
11510 Highway 187
Eureka Springs, Arkansas 72631
PH: 870-253-7269



Client: *City of Fayetteville*

Line: 24-inch; 36-inch; 42-inch

Length: 65,200

Cost: 260,000

Contact: Dave Jurgens, P.E., Water and Wastewater Director
City of Fayetteville
113 West Mountain
Fayetteville, Arkansas 72701
PH: 479-575-8302



Client: *City of Bentonville*

Line: 24-inch

Length: 17,000

Cost: \$2,800,000

Contact: Mike Bender, Public Works Director
City of Bentonville
117 West Central
Bentonville, Arkansas 72712
PH: 479-271-6720



BEAVER WATER DISTRICT

Since the district's inception in 1959, MWY has provided planning, architectural and engineering design and construction management services to the Beaver Water District Board of Directors. As a part of our firm's work at Beaver Water District (BWD), we developed the concepts whereby each of the four member cities, Bentonville, Fayetteville, Rogers and Springdale, would construct treated water transmission mains from the treatment works into their respective distribution systems.

The initial construction of BWD's facility included a raw water intake structure and a 10,000 L.F. 36-inch raw water line to the new treatment facilities. Later a new 48-inch raw water line was added in parallel to the existing 36-inch line. In 2004, a new 60-inch concrete water line (PCCP) was added, again in parallel to the existing 36-inch and 48-inch lines.



MWY prepared the contract documents and construction management services associated with this 60-inch raw water line constructed during the 2004 WTP upgrade.

Contact for this project:
Alan Fortenberry
Beaver Water District
P.O. Box 400
Lowell, Arkansas 72745
Phone: 479-756-3651

CITY OF SPRINGDALE

MWY has provided continuous engineering service to the city of Springdale for nearly 50 years as the city experienced rapid expansion of the food processing industry and related population growth. Major work involved in the planning and design of the Springdale projects included a 24-inch and a parallel 36-inch treated water transmission main from the Beaver water facilities into the city; three 5-MG ground storage water tanks; a 20-MGD water pump station; and dozens of miles of 30-inch, 24-inch and 16-inch distribution main to distribute water into the demand areas of the system.

In 1998, MWY completed preliminary studies for Springdale Water Utilities covering an East Side Water System Expansion. Construction was completed on the 16-inch and 12-inch water line extensions in 1998. During 1999, MWY designed a 10-MG ground storage tank along with 48-inch and 36-inch connection piping on which construction was completed in 2000. Cost of these improvements was approximately \$4 million.



Contact for these projects:

Rene Langston

Springdale Water Utilities

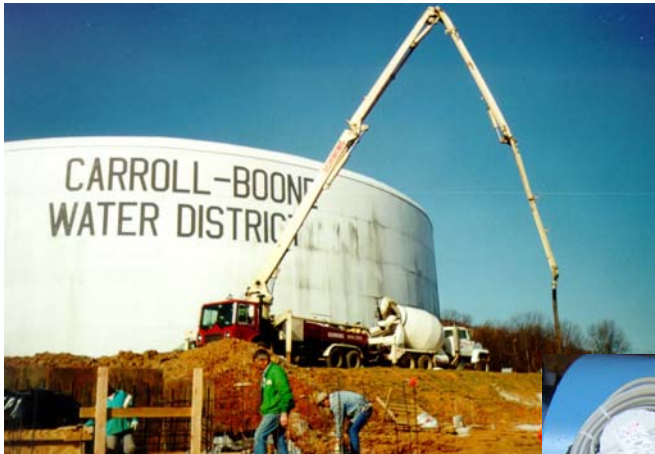
P. O. Box 769

Springdale, Arkansas 72765

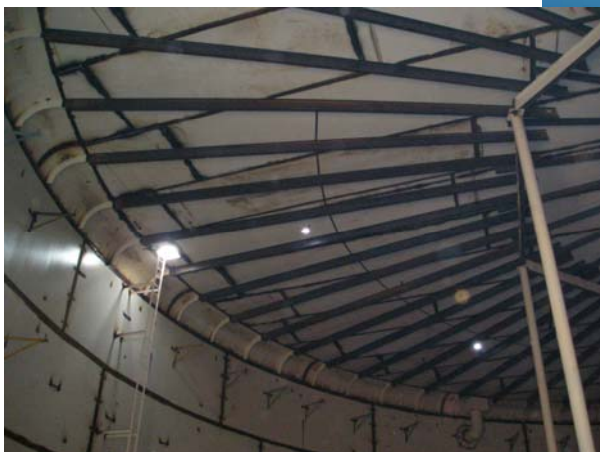
Phone: 479-751-5751

CARROLL-BOONE REGIONAL WATER SYSTEM

The Carroll-Boone Regional Water System was a \$22 million project conceived and designed by MWY that commenced in the mid 1970s and was completed in the early 1980s. The project consisted of a raw water intake structure and treatment plant near Beaver Dam and a 55 mile long treated water line (30-inch and 24-inch) constructed through rough Ozark Mountain terrain from the water treatment plant site near Beaver Dam to Harrison, Arkansas. These facilities now provide treated water to the cities of Eureka Springs, Green Forest, Berryville and Harrison. A radio telemetry system monitors data in each of the four distribution systems and the district's facilities in order that all cities can be delivered an adequate amount of water to meet their demand. The most recent project completed was the second 5-million gallon Pine Mountain ground storage tank. The project consisted of a new 5MG ground storage tank and associated 24-inch site piping improvements. The project was completed in late 2005 with an approximate construction cost of \$1.35 million.



Contact for this project:
John Summers
Carroll-Boone Water District
11510 Highway 187
Eureka Springs, Arkansas 72631
Phone: 870-253-7269



CITY OF FAYETTEVILLE

Over the years, our firm has consulted for the city of Fayetteville regarding all major components of its existing water supply, treated water transmission facilities, size and location of major distribution mains and major storage facilities.

Among the firm's Fayetteville projects was to provide overall design services for a major transmission main between the Beaver Water Treatment Plant and the city, as well as major distribution system improvements that included an additional 12-MG of storage. The

overall design report, detailed design and preparation of plans and specifications, and construction of 51,000 feet of 42-inch water main and 9,000 feet of 36-inch water main were completed in 1994 at a cost of \$4,300,000.



Contact for these projects:

Dave Jurgens, P.E.,

Water and Wastewater Director

City of Fayetteville

113 West Mountain

Fayetteville, Arkansas 72701

Phone: 479-575-8330

CITIES OF ROGERS AND BENTONVILLE



For over 25 years MWY has provided preliminary and detailed planning and engineering for every major component of the Rogers and Bentonville systems. This work has included parallel treated water transmission mains (24-inch and 30-inch) from the Beaver facility into and through Rogers to Bentonville; a 2-MG elevated storage tank and a 1-MG storage tank; a 5-MG ground storage tank; dozens of miles of 24-inch, 20-inch, 18-inch and 16-inch distribution main; two 500,000 gallon elevated tanks and a 100,000 gallon elevated tank; three major booster stations; telephone telemetry system for monitoring major components of each of the two systems; and a 2-MG elevated storage tank completed in late 1991.

Contact: Tom McAlister, Water Utility Manager
Rogers Water Utility
P. O. Box 338, Rogers, Arkansas 72756
Phone: 479-621-1142

Contact: Mike Bender, Public
Works Director
City of Bentonville
Building 305 SW A Street
Bentonville, Arkansas 72712
Phone: 479-271-6720



CITY OF GRAVETTE



MWY has provided engineering service to Gravette for nearly 60 years. Major water system improvements constructed in 1978 included development of additional water treatment and distribution facilities and an elevated water storage tank. Our firm has provided services for more than 100 projects for the city of which a large portion were water system improvement or expansion projects. We have provided the studies and developed a funding package for a rural water project consisting of 65 miles of water

lines. The project bid in July of 2004 and was completed in late summer of 2005. The rural system consists of 80 miles of water lines including a water storage tank and serves 465 water customers.

Contact for this project:
Junior Hartley
Director of City Services
119 East Main Street
Gravette, Arkansas 72736
Phone: 479-787-5757

CITY OF GREEN FOREST

MWY has provided continuous engineering services to the city of Green Forest for nearly 50 years.

We provided services for the construction of water treatment facilities including a raw water transmission main and major distribution system expansion and improvements which were built before 1970.

Our firm designed facilities connecting the city to the Carroll-Boone transmission main which included the construction of water mains, storage tank and related controls.

MWY completed more than 30 water facilities projects for the city including four major rural water extensions carried out between 1995 and 2002 consisting of more than 100 miles of water lines. MWY has assisted the city in numerous extensions and improvements projects as the city expanded its water service boundary.

CITY OF LINCOLN

MWY has provided continuous engineering service to the city of Lincoln for more than 35 years.

In the 1960s we provided the planning, development and construction service for water treatment and distribution systems.

We have completed more than 20 water distribution projects including major extensions to provide service to an industrial park and upgrade the water system as a whole.

In 1995 MWY completed a water distribution facility for Lincoln rural areas consisting of 42 miles of water lines, two water storage tanks and water booster pump stations.

CITY OF PRAIRIE GROVE

MWY provided planning, development, design and construction management services for Prairie Grove water reservoir facilities, water treatment and water distribution lines completed in the mid-1960s.

We have continued to work with the city in the improvement and expansion of its water facilities.

We have completed more than 90 projects for the city of which about 30 percent were water distribution related.

We have also provided engineering for two rural area water distribution systems, of which 17 miles was completed in 2002.

